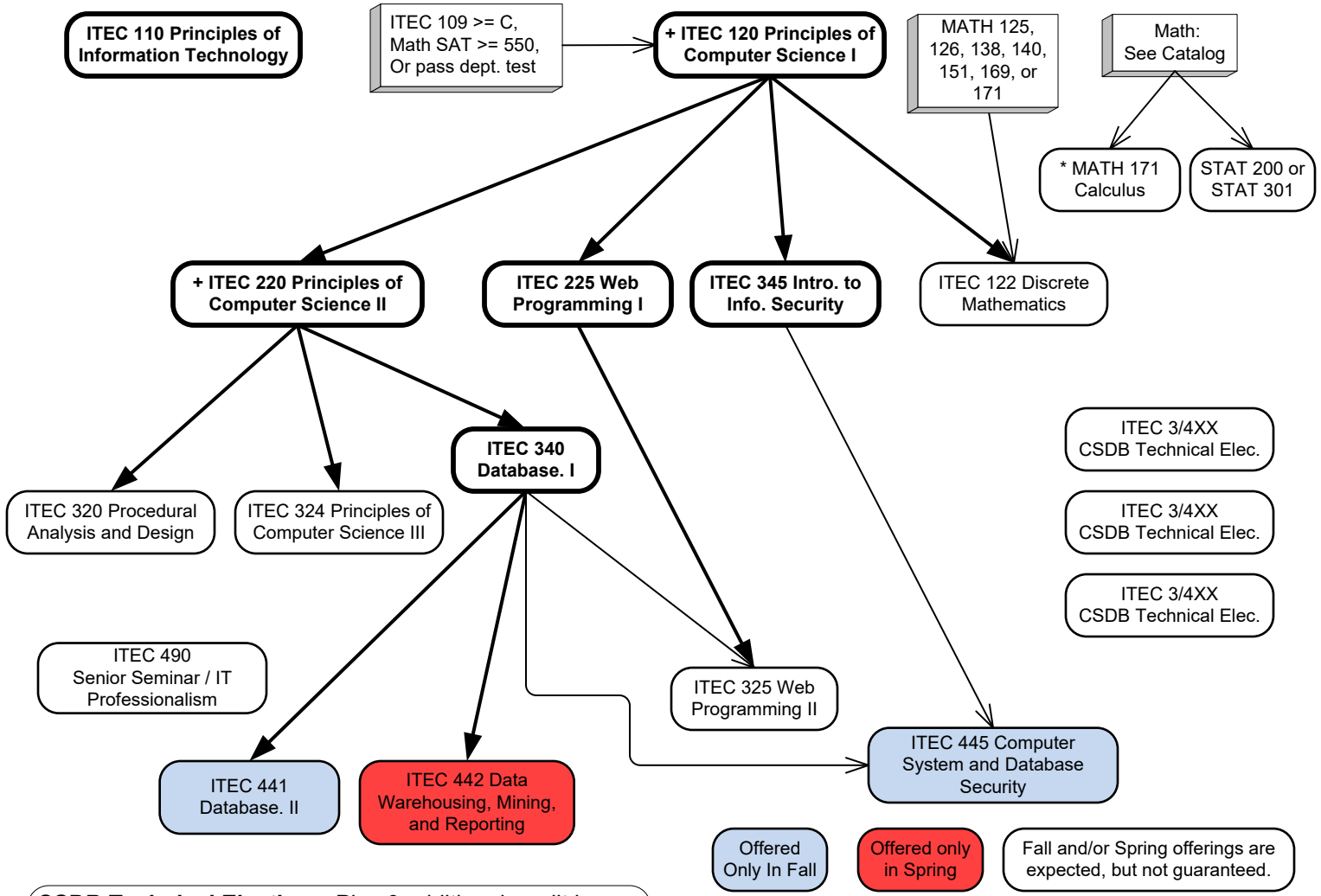


Database Concentration 2018 – 2019



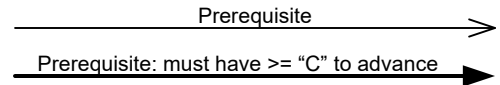
CSDB Technical Electives: Plus 9 additional credit hours chosen from any 300 or 400-level ITEC courses (except ITEC 301, ITEC 304, ITEC 307, ITEC 369, ITEC 381, ITEC 395, ITEC 398, ITEC 466, ITEC 493, ITEC 495, ITEC 496, ITEC 497, or ITEC 498) or any 500 or 600-level ITEC course approved by the Department Chair.

B.S. Requirements (6-8 credits):
 Any 200-level, 300-level, or 400-level ITEC course (except ITEC 281, ITEC 301, ITEC 304, ITEC 307, ITEC 369, ITEC 381, ITEC 398, ITEC 495, ITEC 496, ITEC 497, and ITEC 498) or any 500 or 600-level ITEC course approved by the Department Chair; MATH 172; any 200-level or above Math course; ASTR 111, ASTR 112, any Biology (except BIOL 301 and BIOL 302); any Chemistry; any Geology, GEOS 250 or ITEC 250, any Physics, or PHSC 301.

Within a single concentration, courses used to meet the B.S. Requirements cannot be used to meet any other requirement of that concentration.

Students with more than one concentration and/or major should evaluate each independently.

Offered Only In Fall Offered only in Spring Fall and/or Spring offerings are expected, but not guaranteed.



* **MATH 171** can be replaced by MATH 168 & MATH 169.
 + **ITEC 120 & ITEC 220** can only be attempted twice, including Withdrawals

Courses in bold boxes must be passed with a grade of "C" or better

Major GPA Requirement: 2.0 in all ITEC, MATH, STAT courses applied to the major, excluding courses used to meet the B.S. Requirement.

Core Curriculum:
 MATH 171 is approved for Core Curriculum credit in the Mathematical Sciences.

Students in the IT Department are required to take a Natural Science course to fulfill the College Core B Mathematical or Natural Sciences Requirement.