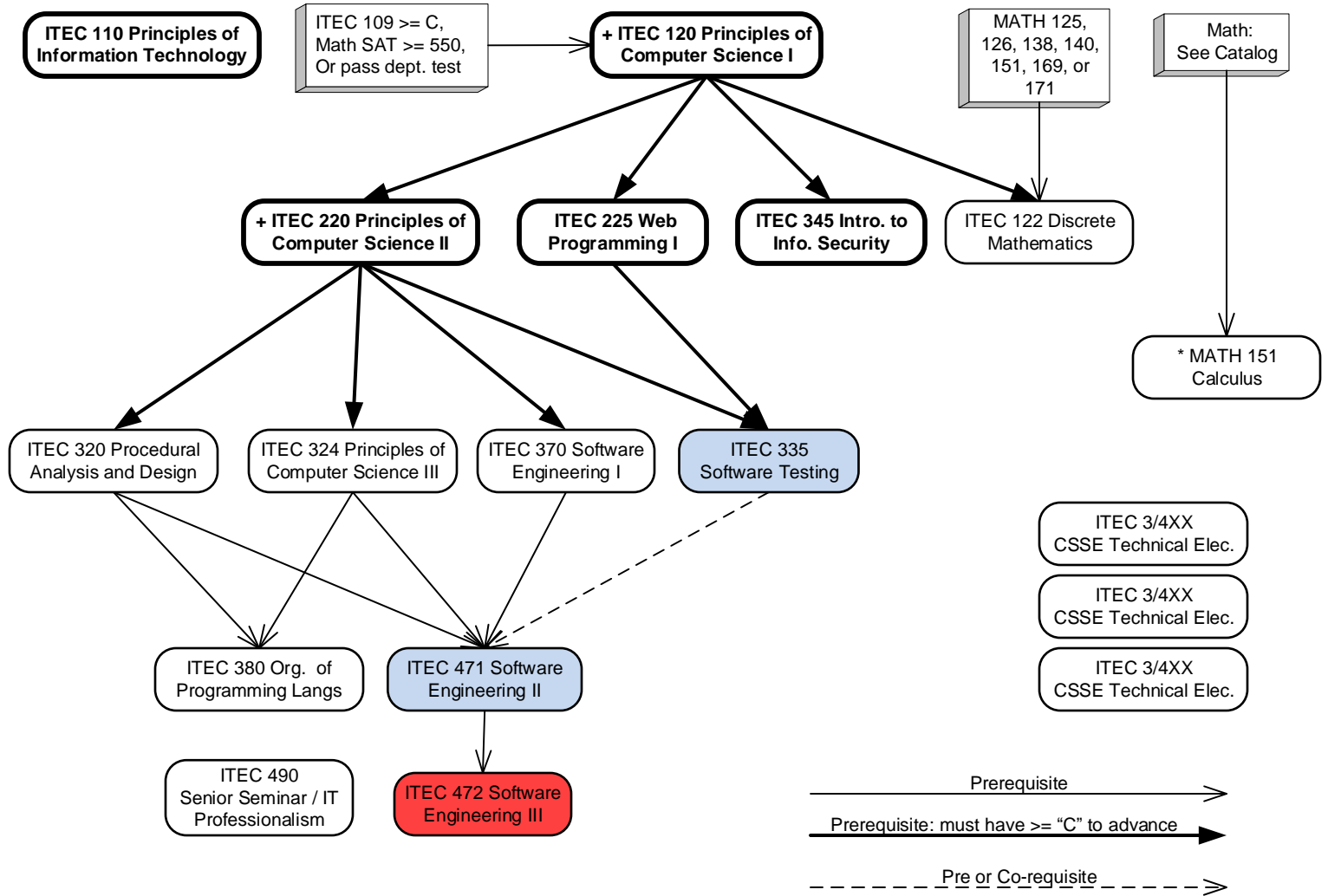


Software Engineering Concentration 2017 - 2018



CSSE Technical Electives: Plus 9 additional credit hours chosen from any 300 or 400-level ITEC courses (except ITEC 301, ITEC 304, ITEC 307, ITEC 381, ITEC 398, ITEC 493, or ITEC 498) or any 500 or 600-level ITEC course approved by the Department Chair.

B.S. Requirements (6-8 credits):

Any 200-level, 300-level, or 400-level ITEC course (except ITEC 281, ITEC 301, ITEC 304, ITEC 307, ITEC 381, ITEC 398, and ITEC 498) or any 500 or 600-level ITEC course approved by the Department Chair; MATH 152; any 200-level or above Math course; ASTR 111, ASTR 112, any Biology (except BIOL 301 and BIOL 302); any Chemistry; any Geology, GEOS 250 or ITEC 250, any Physics, or PHSC 301.

Within a single concentration, courses used to meet the B.S. Requirements cannot be used to meet any other requirement of that concentration.

Students with more than one concentration and/or major should evaluate each independently.

Offered Only In Fall

Offered only in Spring

Fall and/or Spring offerings are expected, but not guaranteed

* Students who have not yet taken MATH 151 or MATH 152 may have to take MATH 171 or MATH 172 instead. See 2018-2019 charts for more details.
+ ITEC 120 & ITEC 220 can only be attempted twice, including Withdrawals

Courses in bold boxes must be passed with a grade of "C" or better

Major GPA Requirement: 2.0 in all ITEC, MATH, STAT courses applied to the major, excluding courses used to meet the B.S. Requirement.

Core Curriculum:

MATH 151 is approved for Core Curriculum credit in the Mathematical Sciences.

Students in the IT Department are required to take a Natural Science course to fulfill the College Core B Mathematical or Natural Sciences Requirement.