

**KATHLEEN M. SULLIVAN**



**STUDENT WORK**





Personal Control



Behavior  
Setting



Architectural  
Determinism

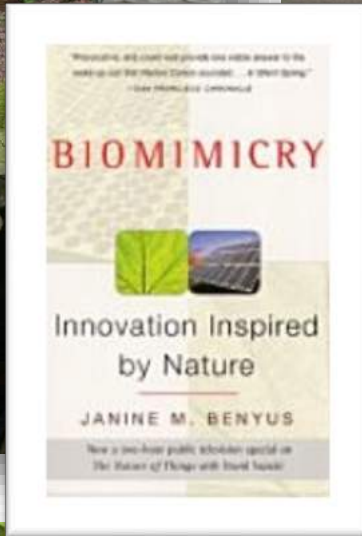
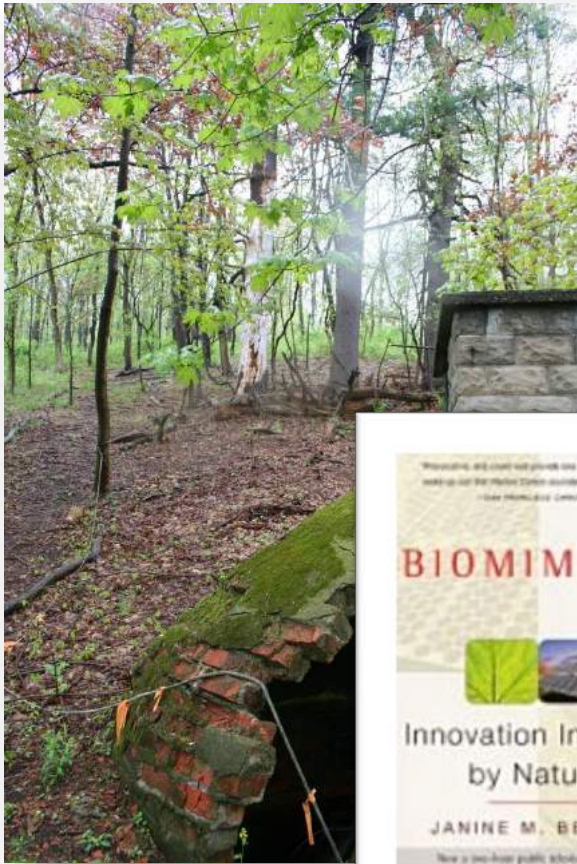


Cue Validity



IAR 105/505  
ENVIRONMENT AND BEHAVIOR  
SAMPLE OF PHOTO ESSAYS

CHATHAM



**IAR 201  
BIOMIMICRY**  
Taught using local resources.

**CHATHAM**

**IAR 210**  
**ARCHITECTURAL GRAPHICS**  
Display for CIDA visit.



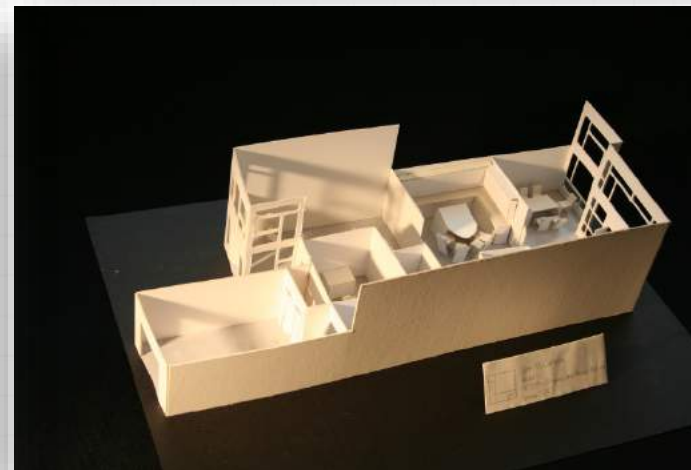
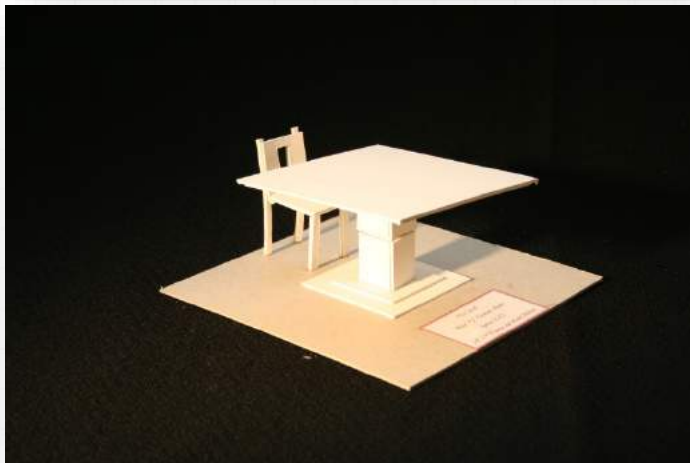
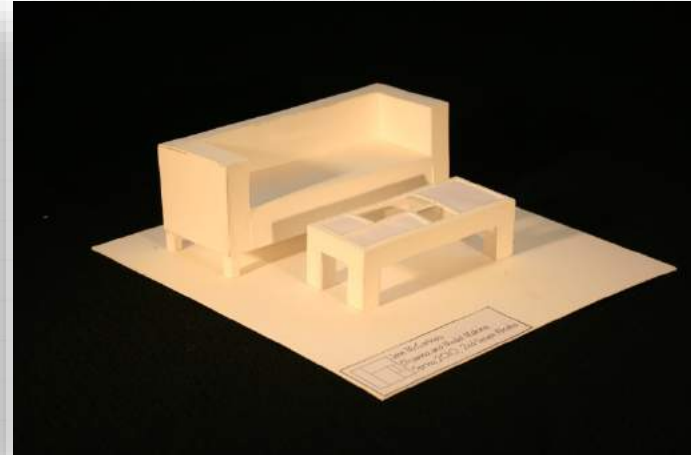
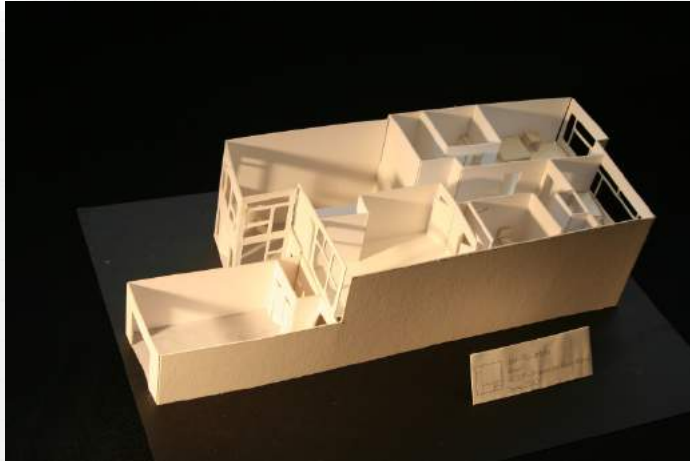
**IAR 210**  
**ARCHITECTURAL GRAPHICS**  
Traditional drafting techniques.



**IAR 219**  
**DRAFTING AND MODEL MAKING**  
Display for CIDA visit.



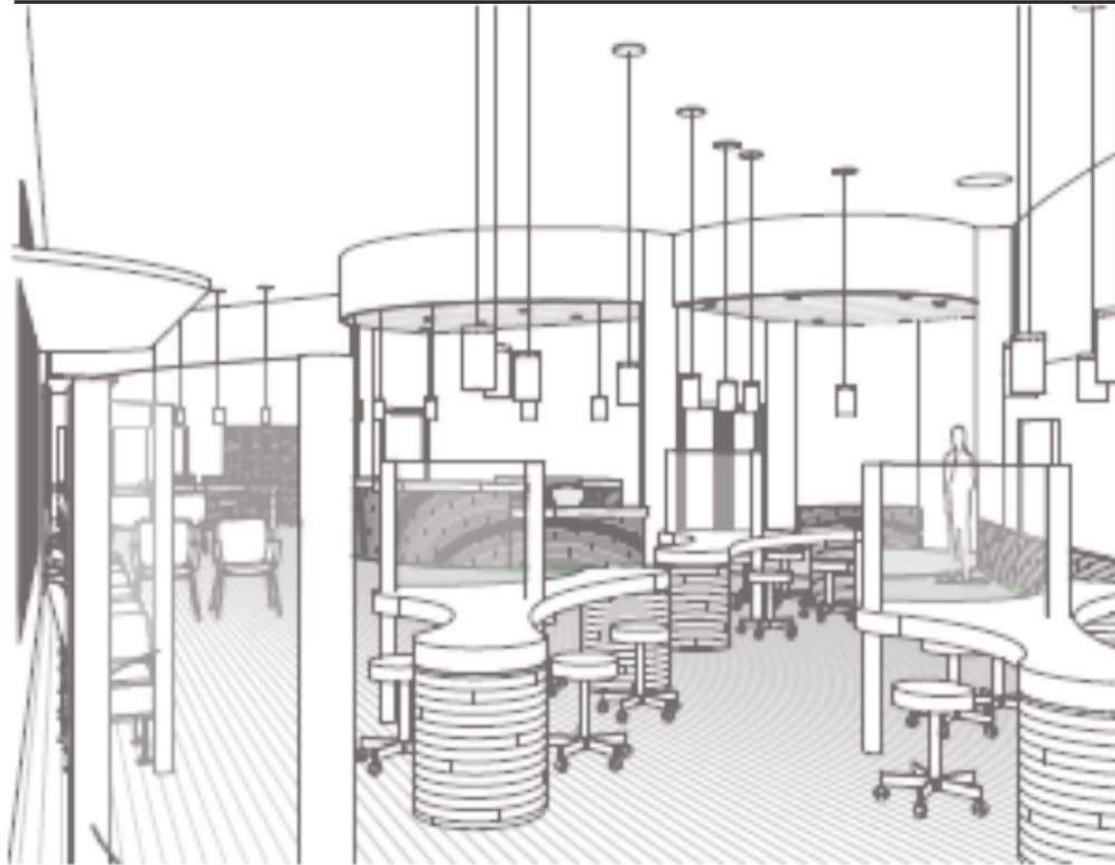
IAR 219  
DRAFTING AND MODEL MAKING





IAR 525  
INTERIOR ARCHITECTURE II, STUDIO

## Living Vision Center & Spec Office



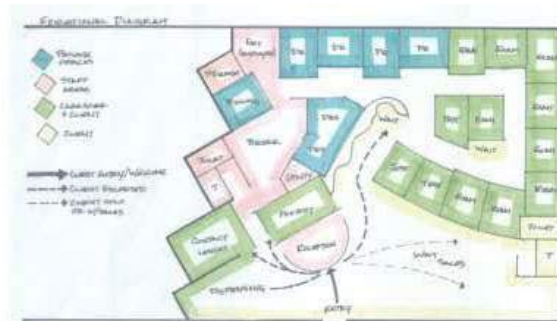
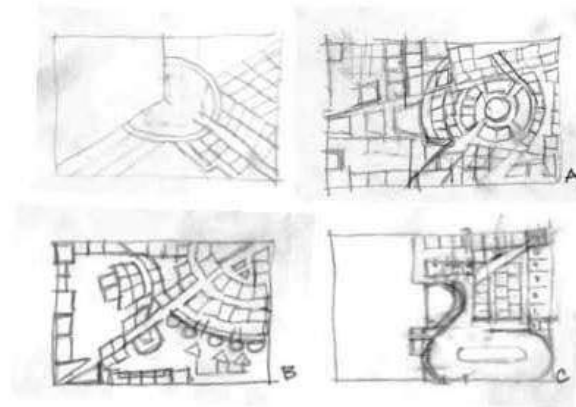
### Goal:

To create an optometric care and sales center that embodies all phases of life and vision. Light is the visual catalyst, just as it starts a chemical reaction in the eye to begin our visual perceptions, it also plays a life giving and enhancing role for humans, our vision and health. Light plays a role in our health as does the dark. These natural rhythms will play out in the spaces by providing a range of lighting experiences to reflect our natural experiences.

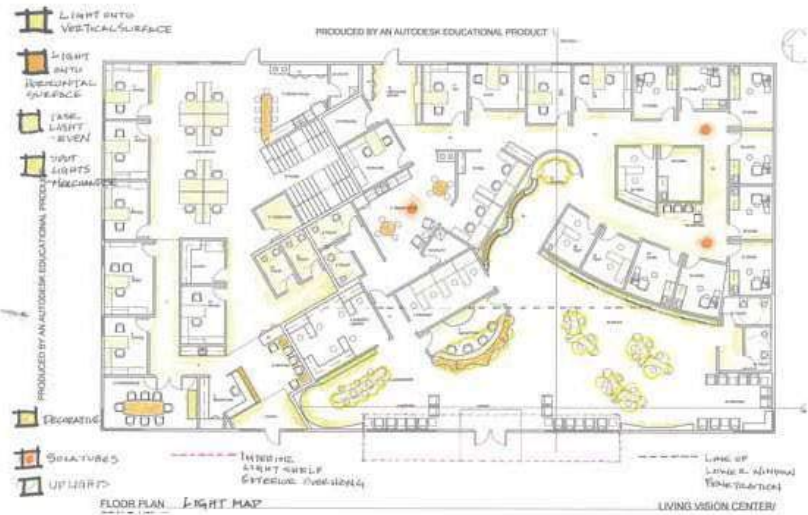
The phases of life or lifecycle will not only apply to the way clients are approached and provided for, but also in respect to the structure which is to be repurposed and the build-out which will be as sustainable as possible. Every effort will be made to use sustainable, plant-based products that bring the project back to the catalyst of light.

IAR 525  
 INTERIOR ARCHITECTURE II, STUDIO

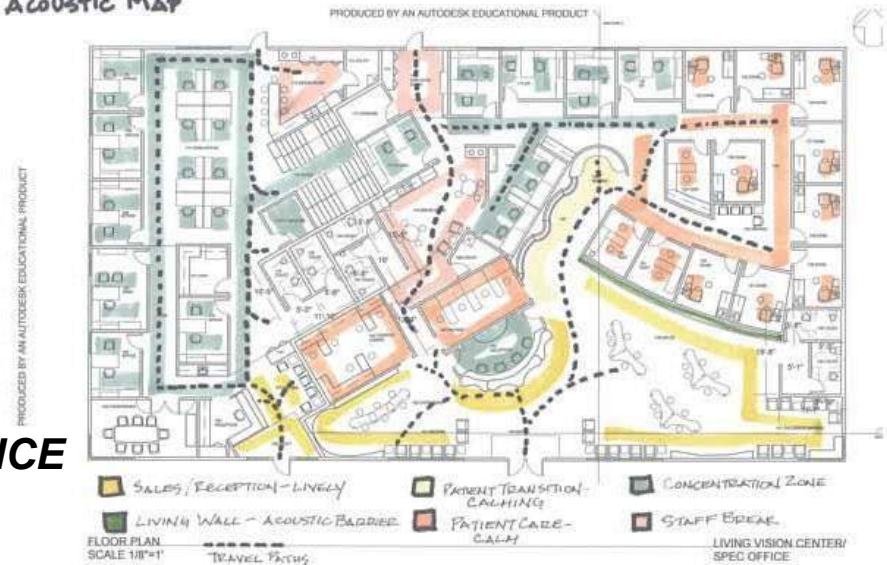
Process Work



LIVING VISION CENTER AND SPEC OFFICE



Acoustic Map



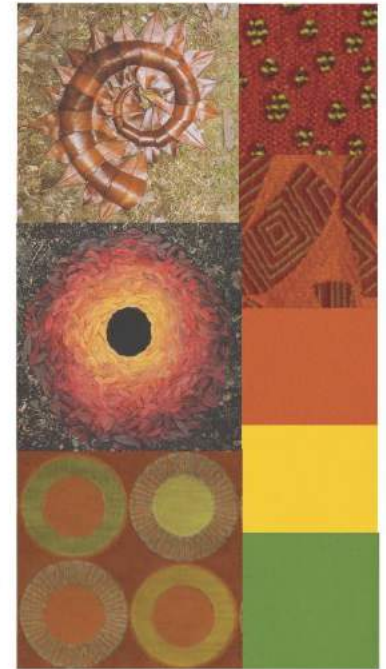
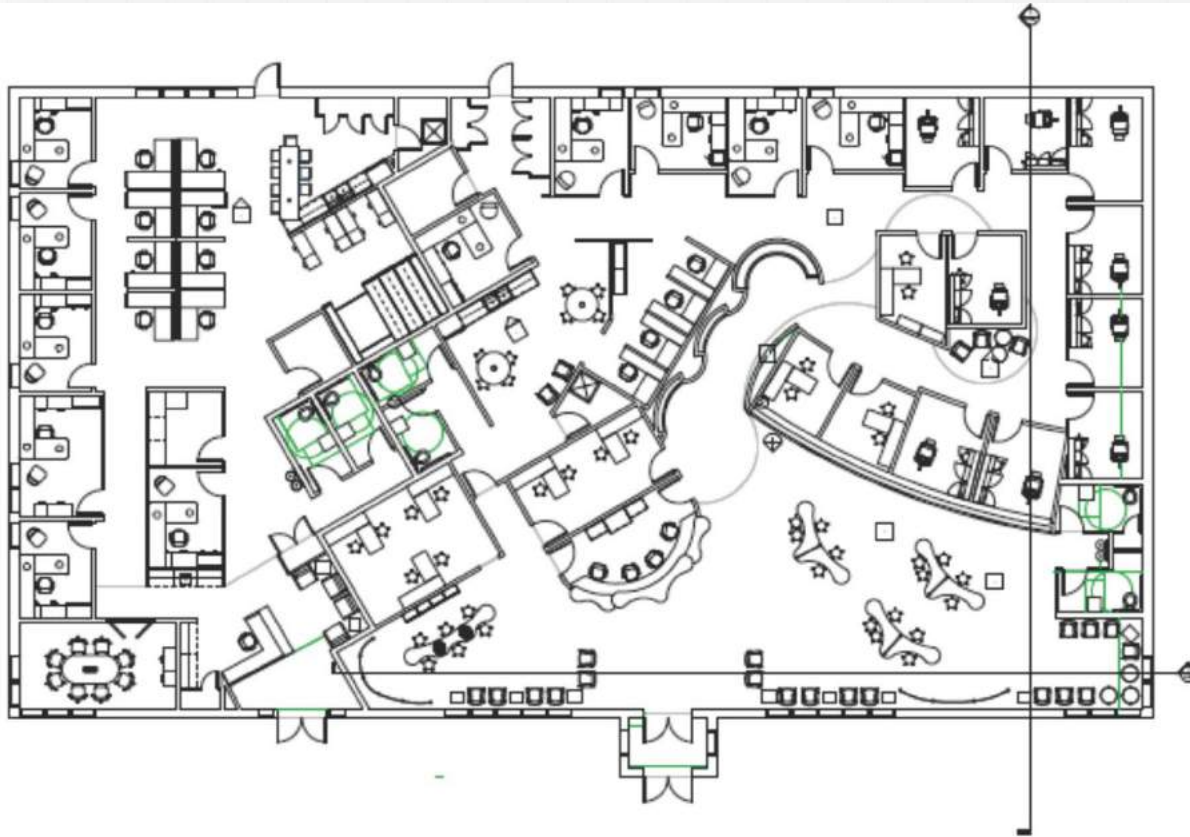
IAR 525  
INTERIOR ARCHITECTURE II, STUDIO



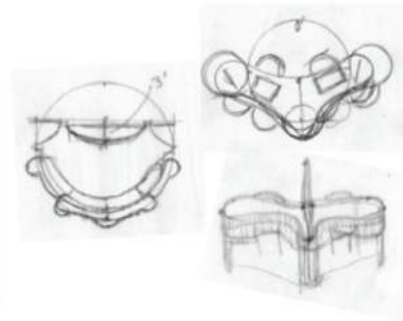
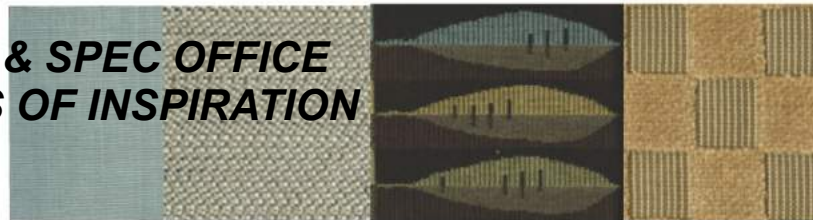
***LIVING VISION CENTER***



IAR 525  
INTERIOR ARCHITECTURE II, STUDIO



**LIVING VISION CENTER & SPEC OFFICE  
FLOOR PLAN & IMAGES OF INSPIRATION**



IAR 525  
INTERIOR ARCHITECTURE II, STUDIO



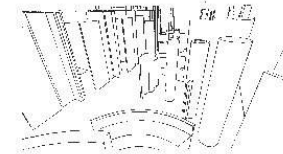
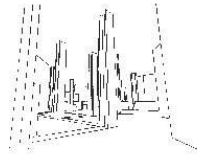
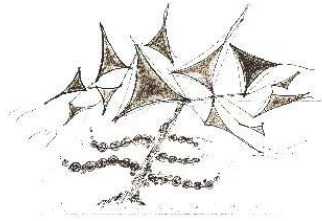
**VISION CENTER – FOCAL POINT  
PERSPECTIVE OF ENTRANCE**

IAR 525  
INTERIOR ARCHITECTURE II, STUDIO

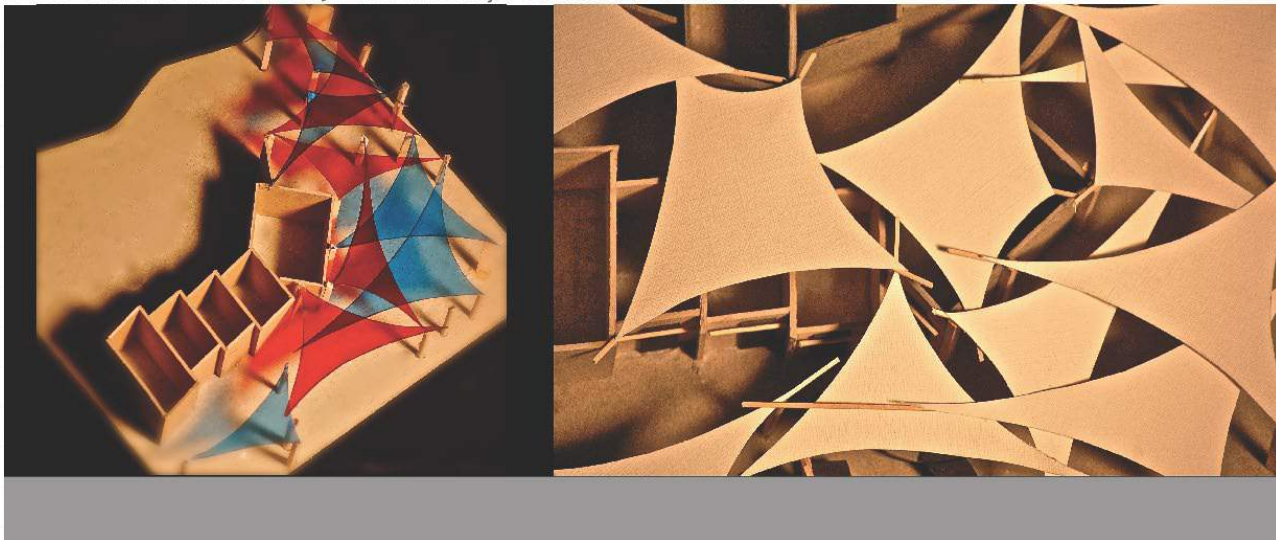


VISION CENTER – FOCAL POINT  
PARTI MODEL

IAR 525  
INTERIOR ARCHITECTURE II, STUDIO



FOCUS: ACOUSTICS, LIGHTING, PROGRAMMING



VISION CENTER – FOCAL POINT  
MODEL

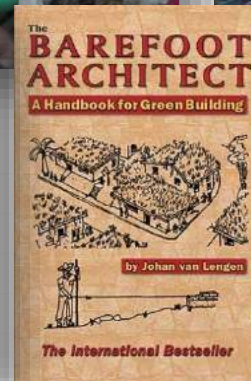
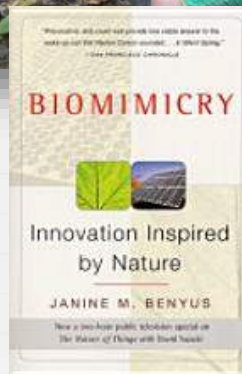




IAR 230/530  
INTERIOR MATERIALS, COLOR, & TEXTILES  
Display for CIDA visit.



CAB 493  
CHATHAM ABROAD IN COSTA RICA  
BIOMIMICRY & VERNACULAR ARCHITECTURE





**IAR 631**  
**GREEN & SUSTAINABLE DESIGN**  
 Projects and research papers on display for a CIDA visit.

# AWARD FOR LEADERSHIP AND ADVANCEMENT OF A MORE SUSTAINABLE ENVIRONMENT THROUGH THE GREEN PRACTICE INITIATIVES



## SEVENTH ANNUAL HOLIDAY LUNCHEON

December 3rd, 2010

11:00am-11:30am Registration  
11:30am-12:00pm Networking  
12:00pm- 2:00pm Program

### PROGRAM

Award Ceremony Honoring:

### CHATHAM UNIVERSITY INTERIOR ARCHITECTURE PROGRAM

For their leadership, dedication and commitment to the advancement of a more sustainable environment through their Green Practice Initiatives, mission and approach of engaging all members of the faculty and student body to rethink, reduce, reuse and recycle as it applies to all facets of their program and daily lives.

Finally, we applaud the LEED Silver renovation of the Chatham University East Campus where the Interior Architecture Program is now located.



Photo by Duquesne Club

### RESERVATIONS

By Wednesday, November 24th to

beth\_cheuvront@drcsarchitects.com / 412.325.8605

Checks payable to "ASID PA WEST" and mail to:  
DRS Architects Attn: Beth Cheuvront, ASID  
1 Gateway Center, 17th Floor Pittsburgh, PA 15222

Get a head start on your holiday shopping!  
Bring cash or checks for the ASID Holiday Auction and support ASID Professional Development and Continuing Education efforts.

## DUQUESNE CLUB

325 6th Avenue Pittsburgh, PA 15222

Main Dining Room  
provided by our Platinum Sponsor:

**OMWorkspace**  
*The premier contract furniture division of OfficeMax*

### MENU

Soup  
Chicken Gumbo

Salad  
California Mixed Greens Garnished with  
Tomatoes, Cucumber &  
Raspberry Vinaigrette Dressing

Vegetable  
Medley of Garden Vegetables

Choice of Entree  
The Duquesne Club's  
Broiled Virginia Spot  
or  
Grilled Tenderloin Steak  
with Bearnaise Sauce

PLEASE INDICATE CHOICE WITH RESERVATION

Dessert  
Creme Brulee with Fresh Cream  
& Tea Cookie

### CASH BAR

### INDIVIDUAL TICKETS

\$390 Corporate Table (seats 8) Members  
\$490 Corporate Table (seats 8) Non-Members  
\$55 Members /\$65 Non-Members / \$45 Students

Reservations MUST be made in advance and accompanied with payment. Sorry, walk-ins will not be accommodated - NO exceptions.

### EVENT SPONSORSHIP

**GOLD LEVEL** - 1 Month ½ Page Advertising in the ASID  
\$600.00 PA WEST Newsflash, 2 Luncheon Tickets,  
Event Program & Power Point Recognition.

**SILVER LEVEL**-1 Month ¼ Page Advertising in the ASID  
\$300.00 PA West Newsflash, 1 Luncheon Ticket,  
Event Program & Power Point Recognition.

**BRONZE LEVEL**-1 Luncheon Ticket, Event Program &  
\$150.00 Power Point Recognition.

### PARKING

Mellon Square Garage - Sixth or Oliver Avenues  
Ninth Street Garage - Ninth Street



CHATHAM

CIDA SET UP FOR THE BACHELOR OF INTERIOR ARCHITECTURE PROGRAM



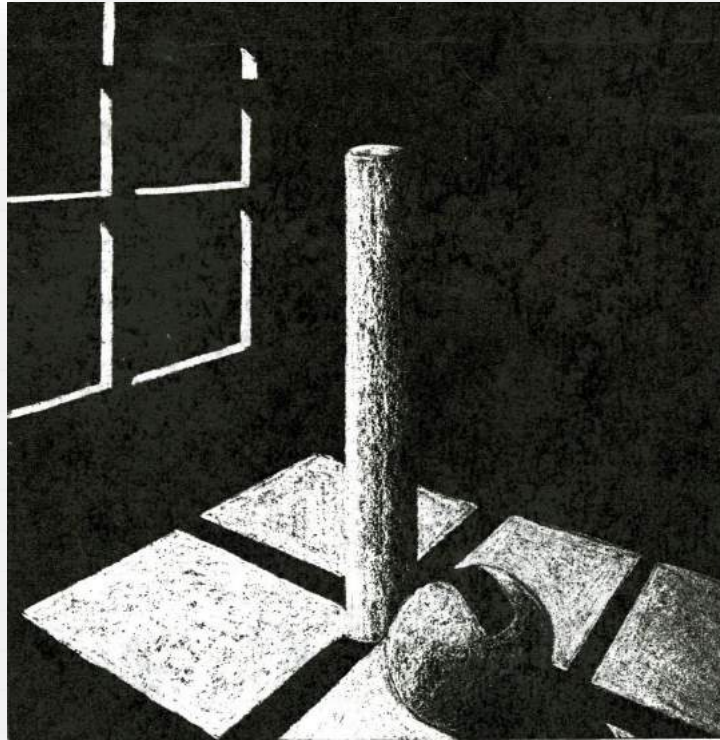
# CIDA SET UP FOR THE MASTER OF INTERIOR ARCHITECTURE PROGRAM



CHATHAM

# LECTURER IN THE FOOD STUDIES PROGRAM REGARDING THE HISTORY OF KITCHEN DESIGN

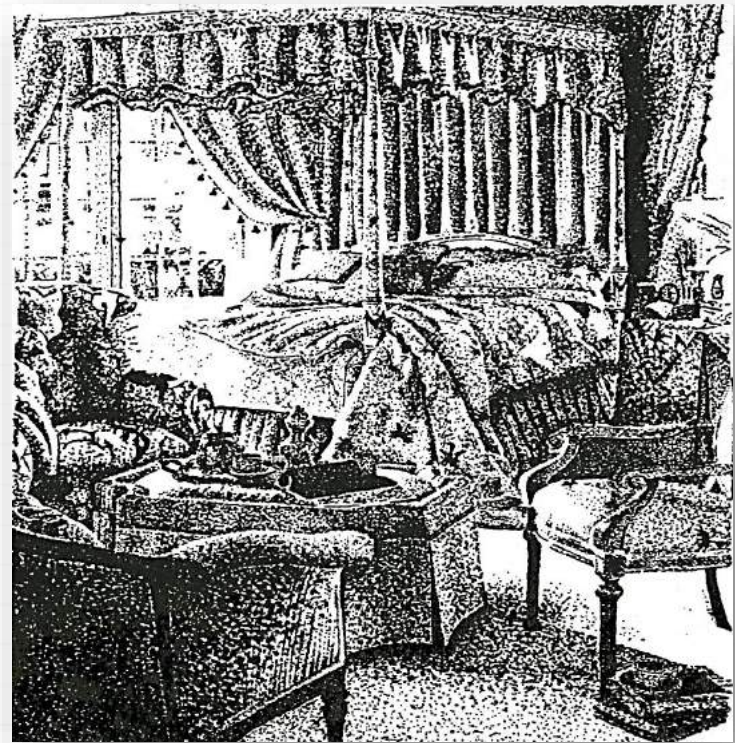




**GRAPHICS I  
SHADE/SHADOW**



**GRAPHICS I**  
**BLACK & WHITE RENDERING**



	COOL GRAY#3	ONE LAYER	TWO LAYERS		COOL GRAY#3	ONE LAYER	TWO LAYERS
P-100				P-285			
P-155				P-292			
P-250				P-297			
P-263				P-306			
P-2706				P-305			
P-2707				P-319			
P-290							
P-317							
P-351							
P-366							
P-489							
P-9220							

"IN ITS SIMPLEST CREATION IS AN INTERESTING HANDCRAFT IN MATERIALS. STUDENTS THOSE MATERIALS, AND FOR THEM A THOUGHT - A CONCEPT MODEL IS THE ACT OF MOST DESIGNERS, DRAWING TWO ARE VIRTUALLY SEPARABLE."

"DRAWING IS ESSENTIAL TO CONCEPTUALIZATION... AT EACH LINE OF THE PENCIL, THE POSSIBILITIES CHANGE AND NEW THOUGHT ARE GERMINATED; FOR DRAWING IS THINKING."

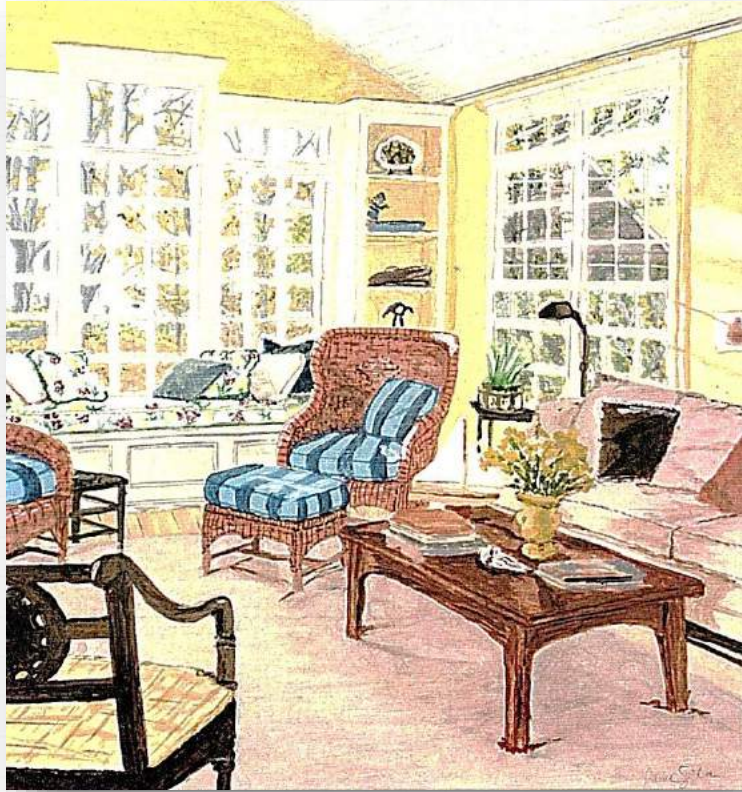
- TATE AND SMITH, INTERIOR DESIGN IN THE 20TH CENTURY



- GRAPHICS II**
- MARKER EXERCISE
  - MATERIALS COLOR STUDIES
  - BASIC PERSPECTIVE TYPES
  - ARCHITECTURAL LETTERING
  - COLOR RENDERING

ID 121  
 SPRING '99  
 TOMOKO DO

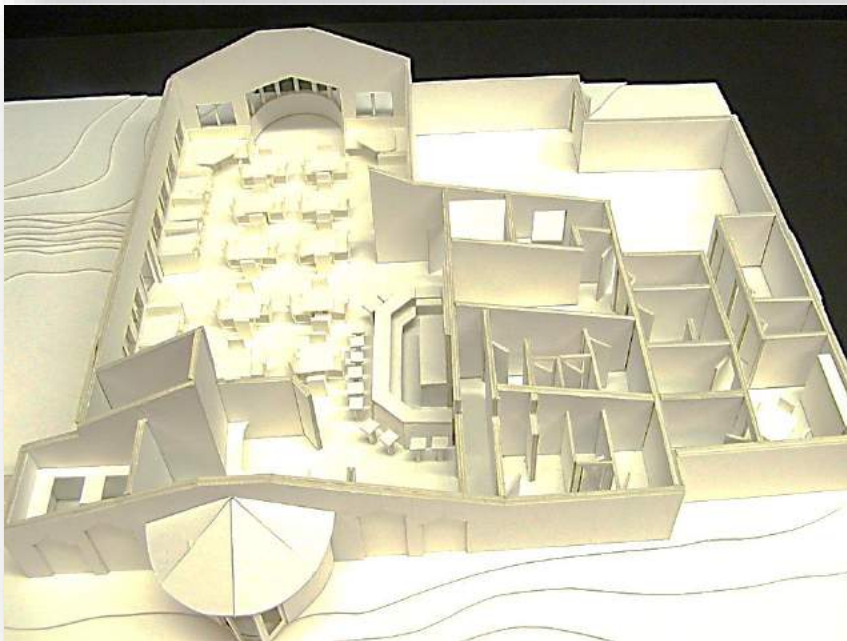
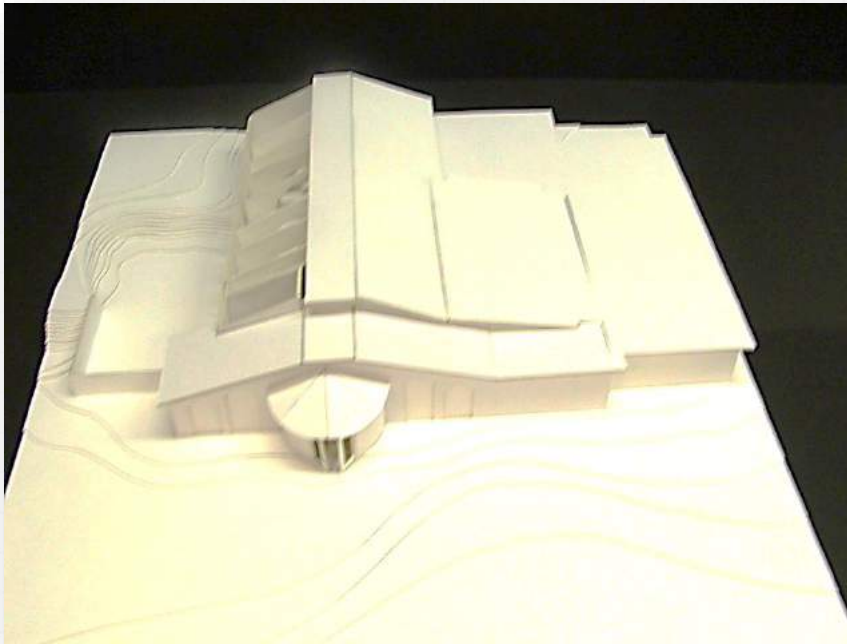
5  
 PINK PAPER #2 OF 3



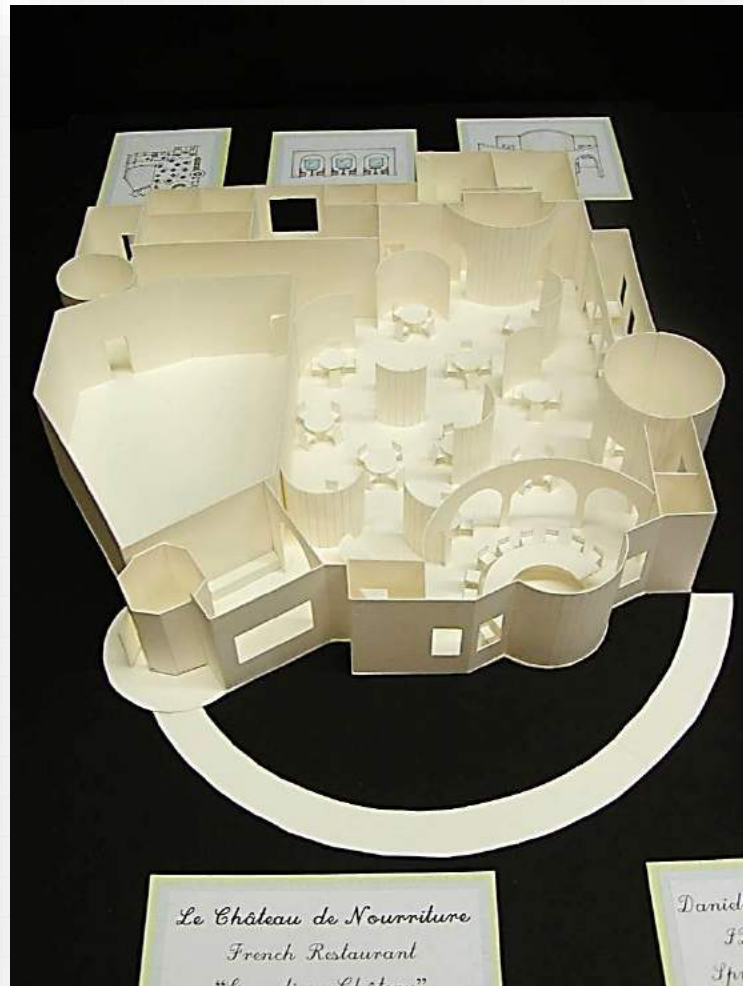
**RENDERING STUDIO  
MARKER & WATERCOLOR**

## DESIGN FUNDAMENTALS





**200'S STUDIO WORK  
MODEL OF RESTAURANT DESIGN**



**200'S STUDIO WORK  
MODEL OF RESTAURANT DESIGN**

200'S STUDIO WORK



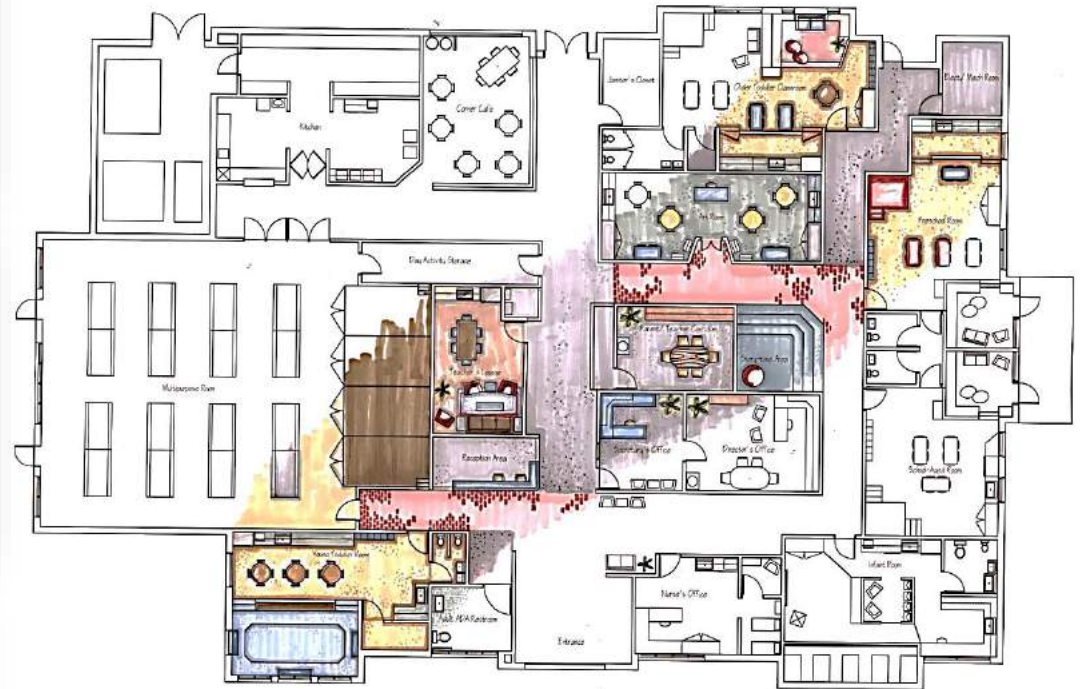
READING AREA



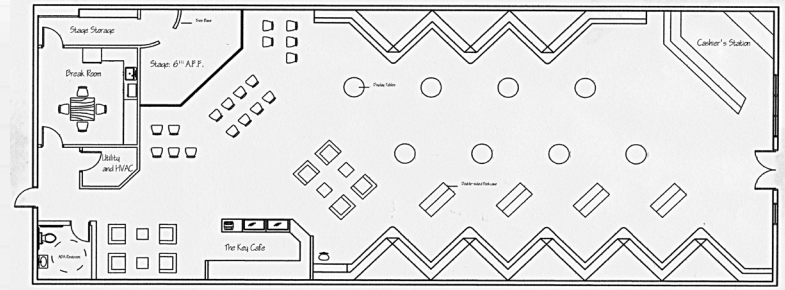
ENTRY



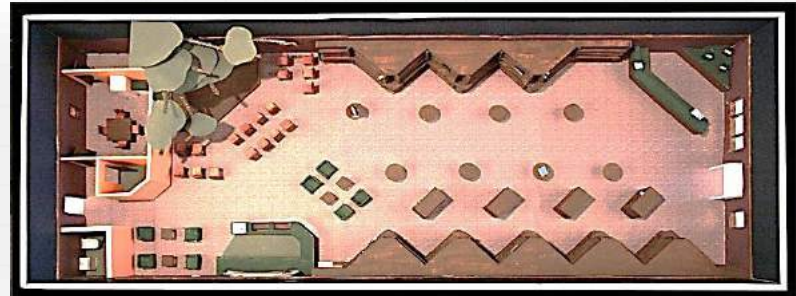
CORNER STREET CAFE



VILLAGE DAY CARE



**PLAN**



**THE MISSING KEY BOOKSTORE**



**200'S STUDIO WORK  
RETAIL DESIGN AND MODEL CONSTRUCTION**



**300'S STUDIO WORK**



**BUILT-IN CASEWORK  
& SECRET PASSAGE**



**GREAT HALL**

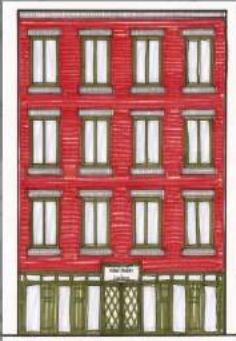
**PLAN**

**BEDROOM**



**HOTEL KRYSTABEL  
MURDER MYSTERY HOTEL**

## PERSPECTIVES



Exterior View



Waiting Room



Main Room

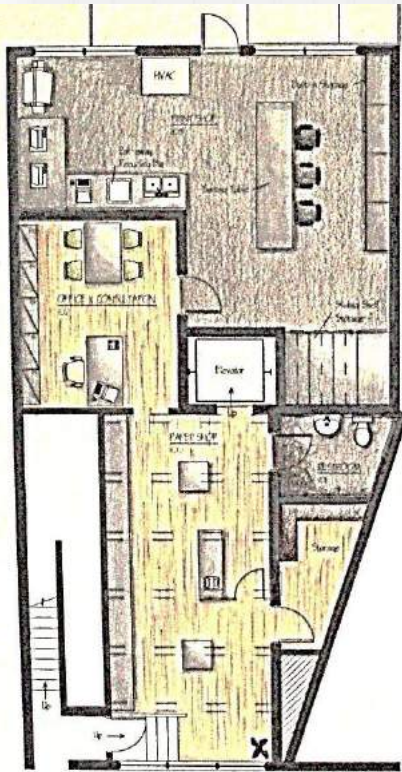


Bicycle Repair

## FLOOR PLAN

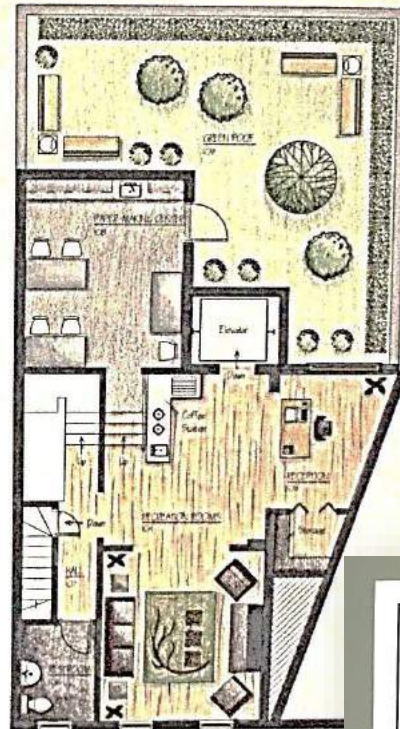


**PEDAL PUSHERS**  
**INNER CITY CYCLING SHOP**  
**TO PROMOTE THE USE OF AN ALTERNATIVE**  
**FORM OF TRANSPORTATION**



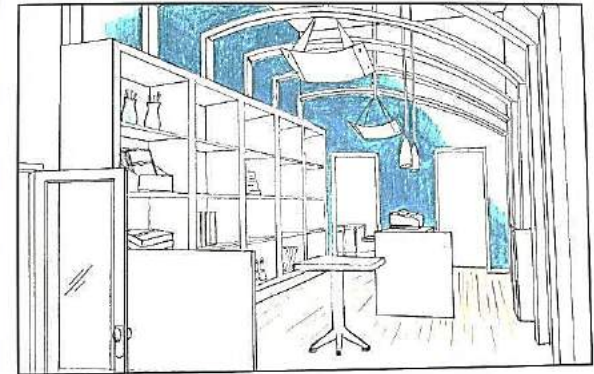
A New Leaf First Floor Plan

Scale: 3/16" = 1'-0"



A New Leaf Second Floor Plan

Scale: 3/16" = 1'-0"



Paper Shop Interior

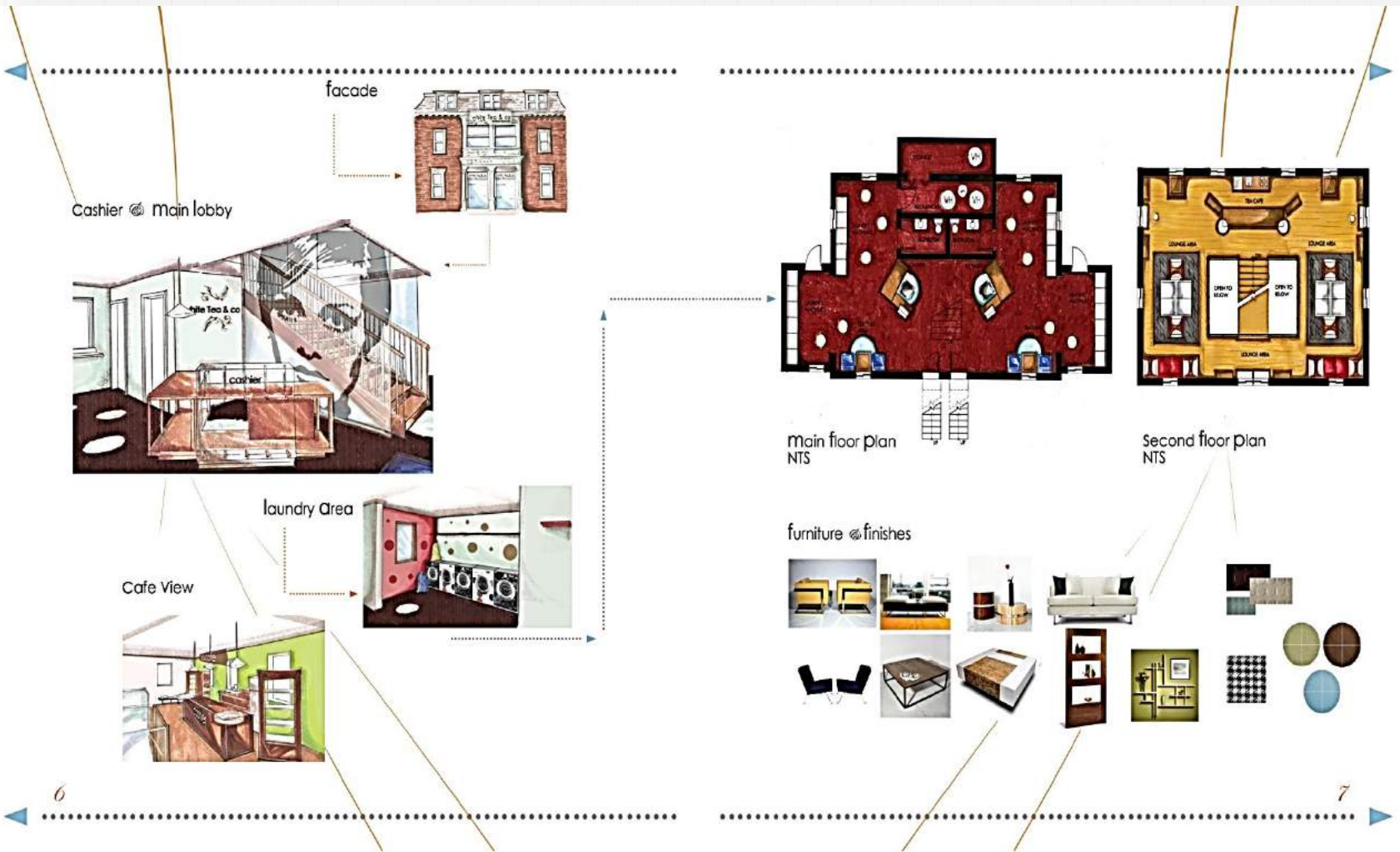


Recreation Rooms

**A NEW LEAF**  
 EXTRAORDINARY RECYCLED  
 PAPER OFFERINGS  
 AND  
 GREEN RETAIL DESIGN

300'S STUDIO WORK

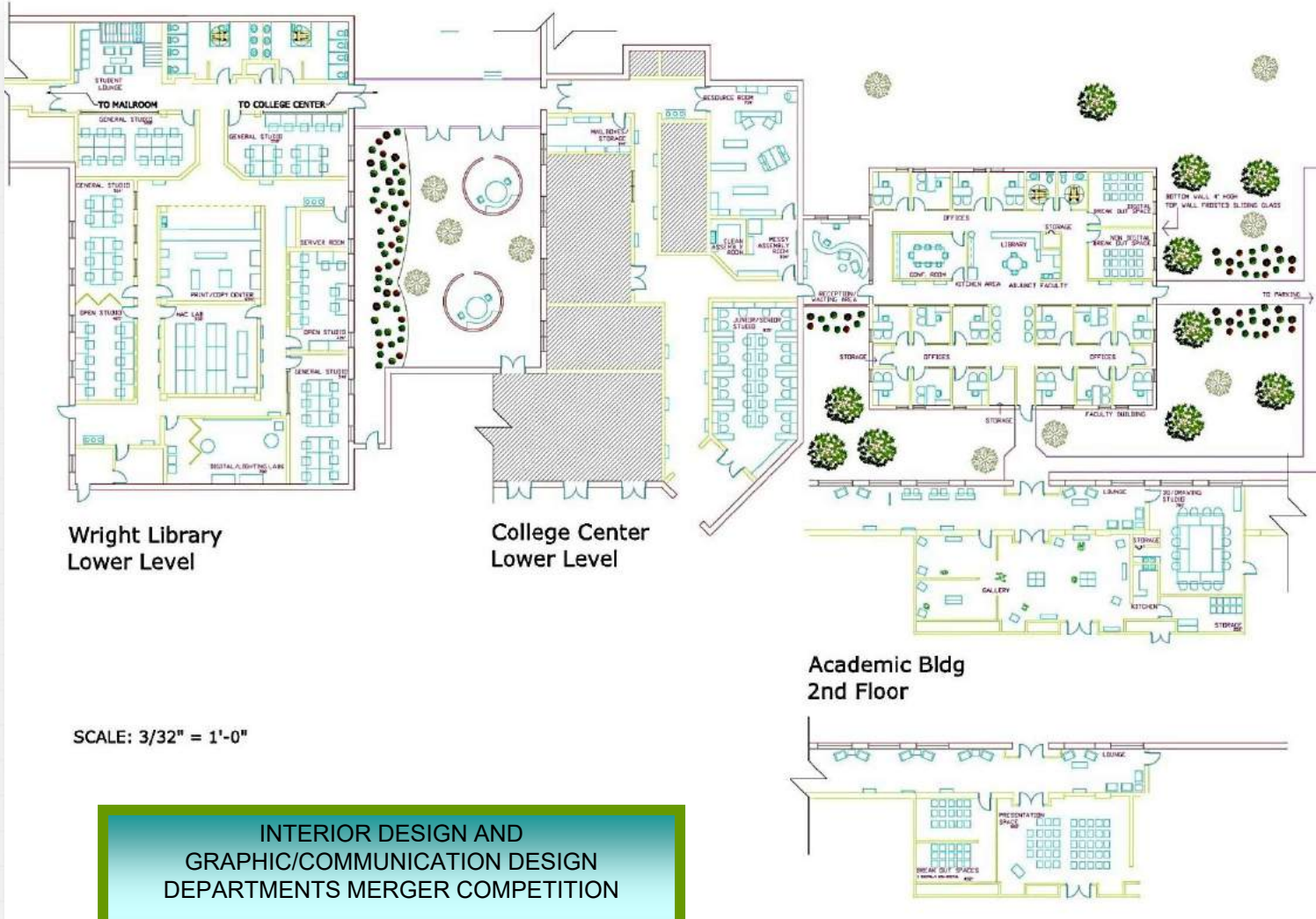
LRC



**WHITE TEA & LAUNDRY, INC.**

**300'S STUDIO WORK**

**LRC**



Wright Library  
Lower Level

College Center  
Lower Level

Academic Bldg  
2nd Floor

SCALE: 3/32" = 1'-0"

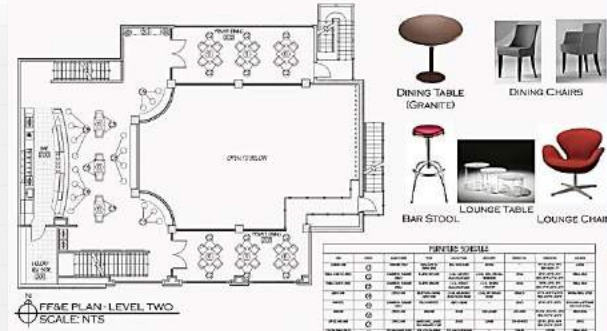
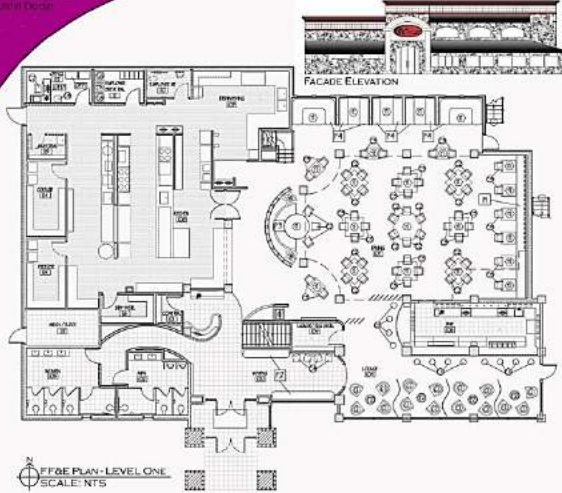
INTERIOR DESIGN AND  
GRAPHIC/COMMUNICATION DESIGN  
DEPARTMENTS MERGER COMPETITION  
**FALL 2007**  
WINNING FLOOR PLAN

300'S STUDIO WORK

# CRAVE RESTAURANT

This project was to locate an existing vacant building to design a restaurant that would meet the goals presented in my senior thesis: "How Interior Design can increase the attraction of customers in a competitive market."

Senior Seminar Fall 2007  
Chris Dosh



FINISH SCHEDULE	
NO.	DESCRIPTION
01	PAINT
02	WALLCOVERING
03	CARPET COVERING
04	FLOOR FINISH
05	CEILING FINISH
06	MECHANICAL
07	ELECTRICAL
08	PLUMBING
09	MECHANICAL
10	ELECTRICAL
11	PLUMBING
12	MECHANICAL
13	ELECTRICAL
14	PLUMBING
15	MECHANICAL
16	ELECTRICAL
17	PLUMBING
18	MECHANICAL
19	ELECTRICAL
20	PLUMBING
21	MECHANICAL
22	ELECTRICAL
23	PLUMBING
24	MECHANICAL
25	ELECTRICAL
26	PLUMBING
27	MECHANICAL
28	ELECTRICAL
29	PLUMBING
30	MECHANICAL
31	ELECTRICAL
32	PLUMBING
33	MECHANICAL
34	ELECTRICAL
35	PLUMBING
36	MECHANICAL
37	ELECTRICAL
38	PLUMBING
39	MECHANICAL
40	ELECTRICAL
41	PLUMBING
42	MECHANICAL
43	ELECTRICAL
44	PLUMBING
45	MECHANICAL
46	ELECTRICAL
47	PLUMBING
48	MECHANICAL
49	ELECTRICAL
50	PLUMBING
51	MECHANICAL
52	ELECTRICAL
53	PLUMBING
54	MECHANICAL
55	ELECTRICAL
56	PLUMBING
57	MECHANICAL
58	ELECTRICAL
59	PLUMBING
60	MECHANICAL
61	ELECTRICAL
62	PLUMBING
63	MECHANICAL
64	ELECTRICAL
65	PLUMBING
66	MECHANICAL
67	ELECTRICAL
68	PLUMBING
69	MECHANICAL
70	ELECTRICAL
71	PLUMBING
72	MECHANICAL
73	ELECTRICAL
74	PLUMBING
75	MECHANICAL
76	ELECTRICAL
77	PLUMBING
78	MECHANICAL
79	ELECTRICAL
80	PLUMBING
81	MECHANICAL
82	ELECTRICAL
83	PLUMBING
84	MECHANICAL
85	ELECTRICAL
86	PLUMBING
87	MECHANICAL
88	ELECTRICAL
89	PLUMBING
90	MECHANICAL
91	ELECTRICAL
92	PLUMBING
93	MECHANICAL
94	ELECTRICAL
95	PLUMBING
96	MECHANICAL
97	ELECTRICAL
98	PLUMBING
99	MECHANICAL
100	ELECTRICAL



Senior Seminar Fall 2007  
Chris Dosh

The pre-design phase included pre-concept studies, 2009 development, interior design, a preliminary space program, a proposal, and a project schedule.

# CRAVE RESTAURANT

# CRAVE RESTAURANT

Research was done to explore human reactions to the built environment and how designers can use this knowledge to create a space that helps attract business. Appetite-evoking colors and an evening sunset inspired the color palette for the restaurant.

Senior Seminar Fall 2007  
Chris Dosh



HOST DESK



BALCONY SEATING



SEMI-CIRCULAR BOOTH



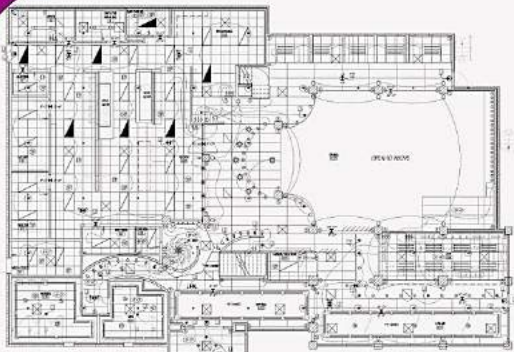
LOUNGE AREA

# SENIOR LEVEL

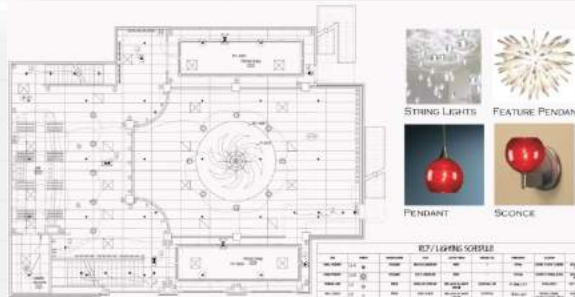
# GRAVE RESTAURANT

A sense of motion & excitement was created through the "spiral" element by reflective surfaces such as bar mirror, glass tiles, and granite counters, as well as the string lights on the home wall.

Architectural Firm: LRC  
Date: 2004



RCP/LIGHTING PLAN - LEVEL ONE  
SCALE: NTS



RCP/LIGHTING PLAN - LEVEL TWO  
SCALE: NTS

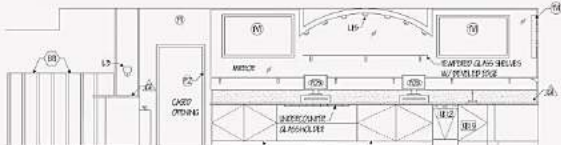


RCP/LIGHTING SYMBOL		SYMBOL	DESCRIPTION	ROOM	REMARKS
1	[Symbol]	100W	FLUORESCENT	KITCHEN	
2	[Symbol]	100W	FLUORESCENT	RESTROOM	
3	[Symbol]	100W	FLUORESCENT	STAIRWELL	
4	[Symbol]	100W	FLUORESCENT	STAIRWELL	
5	[Symbol]	100W	FLUORESCENT	STAIRWELL	
6	[Symbol]	100W	FLUORESCENT	STAIRWELL	
7	[Symbol]	100W	FLUORESCENT	STAIRWELL	
8	[Symbol]	100W	FLUORESCENT	STAIRWELL	
9	[Symbol]	100W	FLUORESCENT	STAIRWELL	
10	[Symbol]	100W	FLUORESCENT	STAIRWELL	
11	[Symbol]	100W	FLUORESCENT	STAIRWELL	
12	[Symbol]	100W	FLUORESCENT	STAIRWELL	
13	[Symbol]	100W	FLUORESCENT	STAIRWELL	
14	[Symbol]	100W	FLUORESCENT	STAIRWELL	
15	[Symbol]	100W	FLUORESCENT	STAIRWELL	
16	[Symbol]	100W	FLUORESCENT	STAIRWELL	
17	[Symbol]	100W	FLUORESCENT	STAIRWELL	
18	[Symbol]	100W	FLUORESCENT	STAIRWELL	
19	[Symbol]	100W	FLUORESCENT	STAIRWELL	
20	[Symbol]	100W	FLUORESCENT	STAIRWELL	
21	[Symbol]	100W	FLUORESCENT	STAIRWELL	
22	[Symbol]	100W	FLUORESCENT	STAIRWELL	
23	[Symbol]	100W	FLUORESCENT	STAIRWELL	
24	[Symbol]	100W	FLUORESCENT	STAIRWELL	
25	[Symbol]	100W	FLUORESCENT	STAIRWELL	
26	[Symbol]	100W	FLUORESCENT	STAIRWELL	
27	[Symbol]	100W	FLUORESCENT	STAIRWELL	
28	[Symbol]	100W	FLUORESCENT	STAIRWELL	
29	[Symbol]	100W	FLUORESCENT	STAIRWELL	
30	[Symbol]	100W	FLUORESCENT	STAIRWELL	
31	[Symbol]	100W	FLUORESCENT	STAIRWELL	
32	[Symbol]	100W	FLUORESCENT	STAIRWELL	
33	[Symbol]	100W	FLUORESCENT	STAIRWELL	
34	[Symbol]	100W	FLUORESCENT	STAIRWELL	
35	[Symbol]	100W	FLUORESCENT	STAIRWELL	
36	[Symbol]	100W	FLUORESCENT	STAIRWELL	
37	[Symbol]	100W	FLUORESCENT	STAIRWELL	
38	[Symbol]	100W	FLUORESCENT	STAIRWELL	
39	[Symbol]	100W	FLUORESCENT	STAIRWELL	
40	[Symbol]	100W	FLUORESCENT	STAIRWELL	
41	[Symbol]	100W	FLUORESCENT	STAIRWELL	
42	[Symbol]	100W	FLUORESCENT	STAIRWELL	
43	[Symbol]	100W	FLUORESCENT	STAIRWELL	
44	[Symbol]	100W	FLUORESCENT	STAIRWELL	
45	[Symbol]	100W	FLUORESCENT	STAIRWELL	
46	[Symbol]	100W	FLUORESCENT	STAIRWELL	
47	[Symbol]	100W	FLUORESCENT	STAIRWELL	
48	[Symbol]	100W	FLUORESCENT	STAIRWELL	
49	[Symbol]	100W	FLUORESCENT	STAIRWELL	
50	[Symbol]	100W	FLUORESCENT	STAIRWELL	
51	[Symbol]	100W	FLUORESCENT	STAIRWELL	
52	[Symbol]	100W	FLUORESCENT	STAIRWELL	
53	[Symbol]	100W	FLUORESCENT	STAIRWELL	
54	[Symbol]	100W	FLUORESCENT	STAIRWELL	
55	[Symbol]	100W	FLUORESCENT	STAIRWELL	
56	[Symbol]	100W	FLUORESCENT	STAIRWELL	
57	[Symbol]	100W	FLUORESCENT	STAIRWELL	
58	[Symbol]	100W	FLUORESCENT	STAIRWELL	
59	[Symbol]	100W	FLUORESCENT	STAIRWELL	
60	[Symbol]	100W	FLUORESCENT	STAIRWELL	
61	[Symbol]	100W	FLUORESCENT	STAIRWELL	
62	[Symbol]	100W	FLUORESCENT	STAIRWELL	
63	[Symbol]	100W	FLUORESCENT	STAIRWELL	
64	[Symbol]	100W	FLUORESCENT	STAIRWELL	
65	[Symbol]	100W	FLUORESCENT	STAIRWELL	
66	[Symbol]	100W	FLUORESCENT	STAIRWELL	
67	[Symbol]	100W	FLUORESCENT	STAIRWELL	
68	[Symbol]	100W	FLUORESCENT	STAIRWELL	
69	[Symbol]	100W	FLUORESCENT	STAIRWELL	
70	[Symbol]	100W	FLUORESCENT	STAIRWELL	
71	[Symbol]	100W	FLUORESCENT	STAIRWELL	
72	[Symbol]	100W	FLUORESCENT	STAIRWELL	
73	[Symbol]	100W	FLUORESCENT	STAIRWELL	
74	[Symbol]	100W	FLUORESCENT	STAIRWELL	
75	[Symbol]	100W	FLUORESCENT	STAIRWELL	
76	[Symbol]	100W	FLUORESCENT	STAIRWELL	
77	[Symbol]	100W	FLUORESCENT	STAIRWELL	
78	[Symbol]	100W	FLUORESCENT	STAIRWELL	
79	[Symbol]	100W	FLUORESCENT	STAIRWELL	
80	[Symbol]	100W	FLUORESCENT	STAIRWELL	
81	[Symbol]	100W	FLUORESCENT	STAIRWELL	
82	[Symbol]	100W	FLUORESCENT	STAIRWELL	
83	[Symbol]	100W	FLUORESCENT	STAIRWELL	
84	[Symbol]	100W	FLUORESCENT	STAIRWELL	
85	[Symbol]	100W	FLUORESCENT	STAIRWELL	
86	[Symbol]	100W	FLUORESCENT	STAIRWELL	
87	[Symbol]	100W	FLUORESCENT	STAIRWELL	
88	[Symbol]	100W	FLUORESCENT	STAIRWELL	
89	[Symbol]	100W	FLUORESCENT	STAIRWELL	
90	[Symbol]	100W	FLUORESCENT	STAIRWELL	
91	[Symbol]	100W	FLUORESCENT	STAIRWELL	
92	[Symbol]	100W	FLUORESCENT	STAIRWELL	
93	[Symbol]	100W	FLUORESCENT	STAIRWELL	
94	[Symbol]	100W	FLUORESCENT	STAIRWELL	
95	[Symbol]	100W	FLUORESCENT	STAIRWELL	
96	[Symbol]	100W	FLUORESCENT	STAIRWELL	
97	[Symbol]	100W	FLUORESCENT	STAIRWELL	
98	[Symbol]	100W	FLUORESCENT	STAIRWELL	
99	[Symbol]	100W	FLUORESCENT	STAIRWELL	
100	[Symbol]	100W	FLUORESCENT	STAIRWELL	

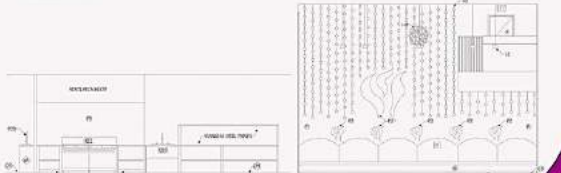
Architectural Firm: LRC  
Date: 2004

Levels of illumination appropriate for mood and time of day were achieved by a dimming system and adjustable shade shades. Incandescent illumination was used for lighting and accents such as wall and decorative glow on patterns and food.

# GRAVE RESTAURANT



LEVEL BAR ELEVATION  
SCALE: NTS



KITCHEN ELEVATION  
SCALE: NTS

BANQUETTE WALL ELEVATION  
SCALE: NTS

Architectural Firm: LRC  
Date: 2004

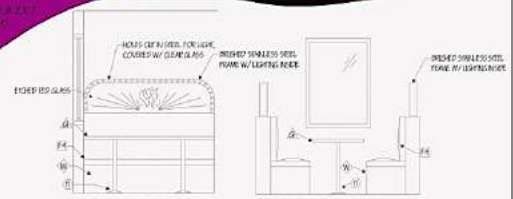
The former wall found in the garage as well as the banquette wall represent the existing conditions and the adjacent inner banquette space. A full color sample menu was created for the project, including wine selections.

# GRAVE RESTAURANT

# GRAVE RESTAURANT

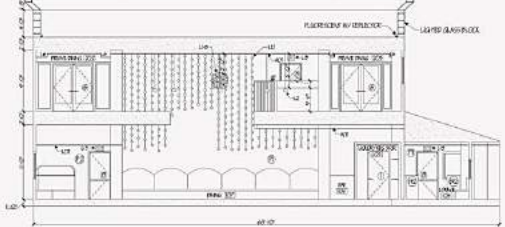
Sections, sections, and details were included in the design to make construction as accurate as possible.

Architectural Firm: LRC  
Date: 2004

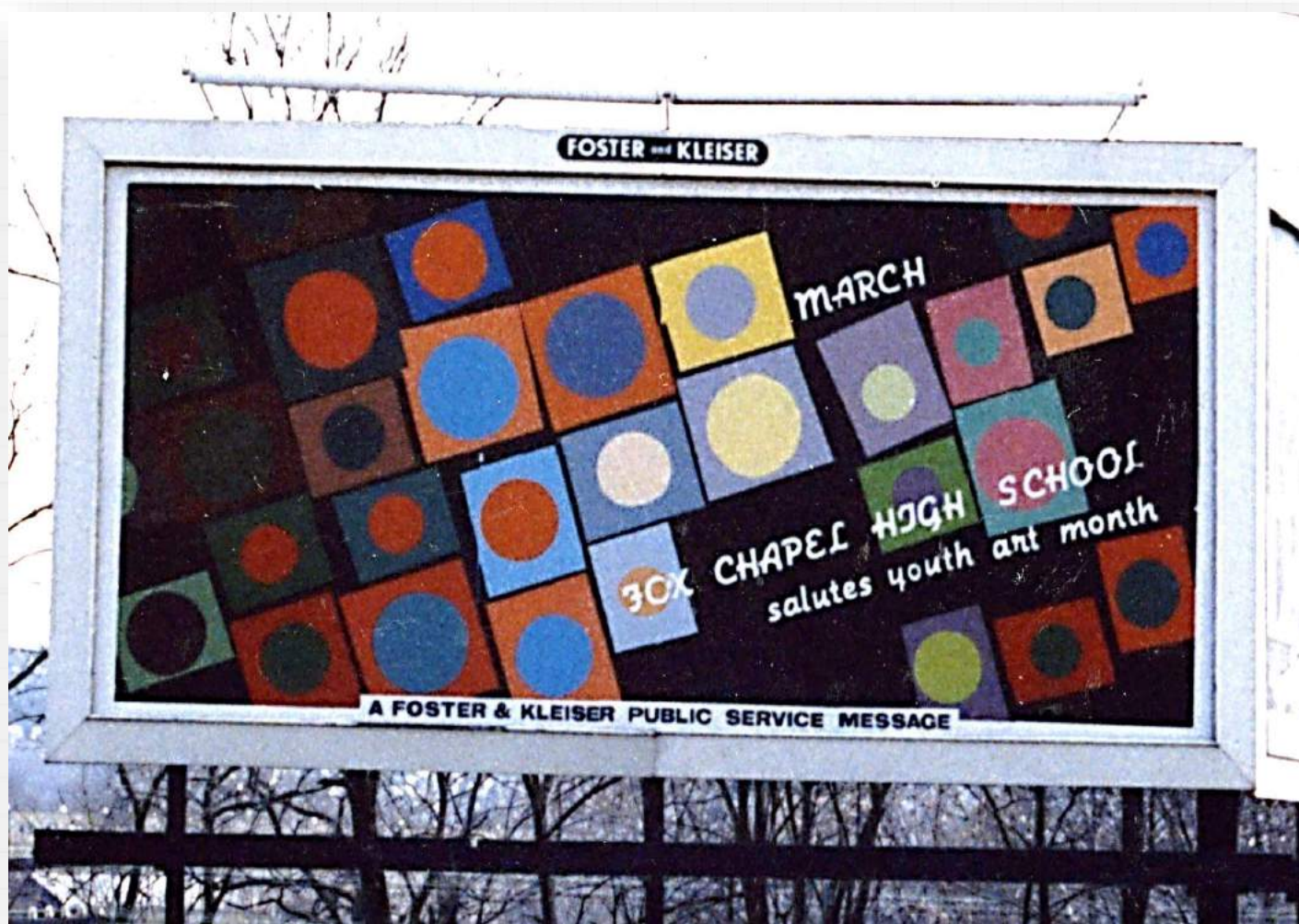


TYPICAL BOOTH DETAIL  
SCALE: NTS

TYPICAL BOOTH DETAIL  
SCALE: NTS



BUILDING SECTION  
SCALE: NTS



**BILLBOARD DESIGNED AND CREATED  
BY MY HIGH SCHOOL STUDENTS**

**FOX CHAPEL**



**PROFESSIONAL WORK**





**CARNEGIE LIBRARY OF CONNELSVILLE, PA  
HISTORIC RESTORATION – READING ROOM**

**BAIERL FAMILY YMCA  
LOBBY**



**BAIERL FAMILY YMCA  
GYMNASIUM**



**BAIERL FAMILY YMCA  
FITNESS CENTER**

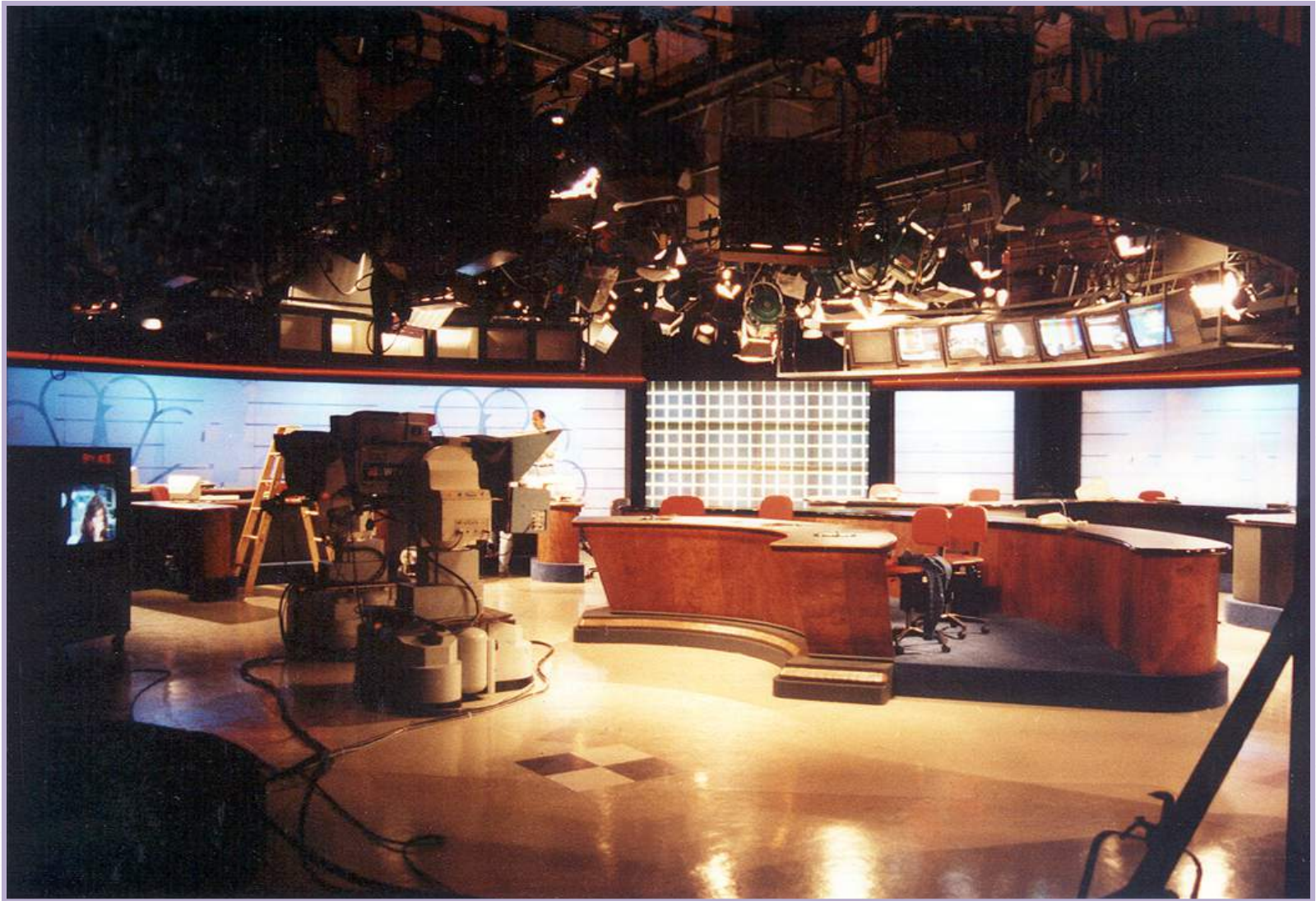


**BETHANY PRESBYTERIAN CHURCH  
MULTI-PURPOSE ROOM**



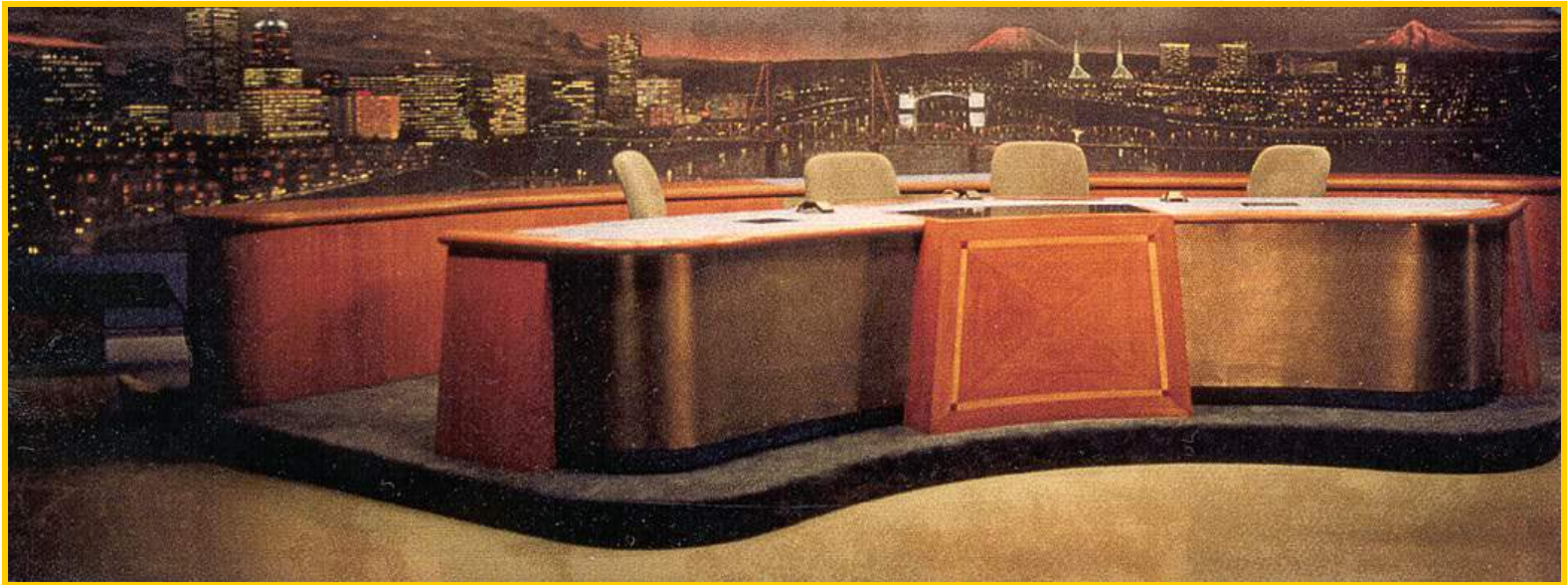
**BENEDUM THEATRE  
DOO-WOP CONCERT SET**





**WTVJ TV NEWS SET  
MIAMI, FLORIDA**





**KOIN TV NEWS SET  
PORTLAND, OREGON**

**NORWIN PUBLIC LIBRARY  
MAIN DESK**



**NORWIN PUBLIC LIBRARY  
READING AREA**



**CRANBERRY CHILDREN'S LIBRARY  
COMPUTER AREA**



**CLEANTOWN CAR WASH  
CUSTOMER AREA**



**INGOMAR UNITED METHODIST CHURCH  
CAFE AREA**



**POWELL RESIDENCE**



**BATH**

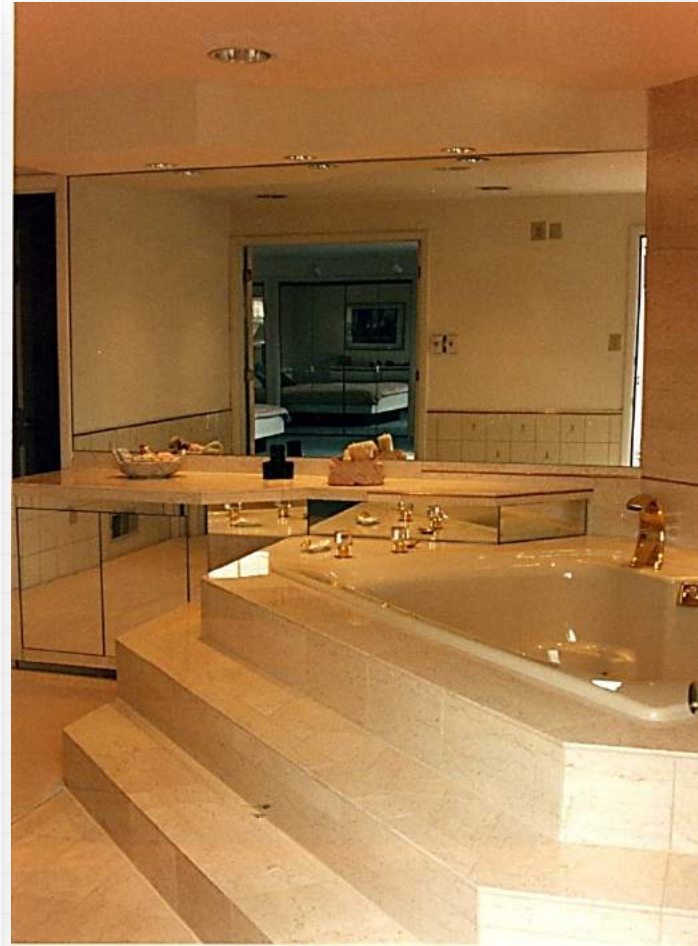


**KITCHEN**

**CHAPAS RESIDENCE**



**POWDER ROOM**



**MAIN BATHROOM**





**WESTERN PENNSYLVANIA HUMANE SOCIETY  
MAIN LOBBY**



**WESTERN PENNSYLVANIA HUMANE SOCIETY  
HOLDING AREA**



**SAINT CATHERINE'S OF SWEDEN CATHOLIC CHURCH  
SANCTUARY**



**HOLY SEPLUCHAR CATHOLIC CHURCH  
SANCTUARY**

**NORTH SIDE BANK, BRANCH OFFICE  
TELLER AREA**



**CONFERENCE ROOM**



**CEO'S OFFICE**



**CONSOLIDATED NATURAL GAS HEADQUARTERS  
PITTSBURGH, PENNSYLVANIA**

**GOOD SAMARITAN HOSPICE**

**BED ROOM**



**BED ROOM**

**LOBBY**



**THANK YOU**

